

Headquarters Laboratory

P.O. Box 670
Collinsville, MS 39325
Office (601) 626-1100
Fax (601) 626-1122



Ron Smith & Associates, Inc.

Testing Division

Toll Free: 1-866-832-6772 | www.RonSmithandAssociates.com
Email: testing@ronsmithandassociates.com

Summary Report

Fall 2018 Latent Print Processing Proficiency Test #18502

Issued: November 27, 2018

On August 27, 2018, Ron Smith and Associates, Inc. (RS&A) shipped the Fall 2018 Latent Print Processing Proficiency Test #18502. Participants were required to submit their responses no later than September 27, 2018 in order for them to be included in this summary report. A total of 56 tests were ordered and shipped, with 56 participants returning their responses. **This summary report is based on 168 individual responses (56 participants returning 3 responses each).**

The results presented in this report reflect whether or not the participants' submitted results agree or disagree with the assigned values garnered from pre-distribution testing and outlined in *The Manufacturer's Report* (Appendix 1). The primary purpose of a Summary Report is to provide an overall documentation of all the submitted responses. It is RS&A's intention to go a step further by providing more meaningful statistical results through analyzing the submitted responses in relation to the demographics obtained from each of the examiners participating in this proficiency test. All results and statistics for Test #18502 will be outlined through graphs and charts found in the remainder of this report.

RS&A strives to maintain the confidentiality of all of its clients and participants. All results are obtained and published using randomly generated test codes. RS&A will not release the identity of any participant without the written consent of the participant and/or the agency involved.

For any additional information, please contact the Latent Print Processing Proficiency Testing Coordinator at testing@ronsmithandassociates.com or call toll free at 1-866-832-6772.

Appendix 1

Test Manufacturer's Information

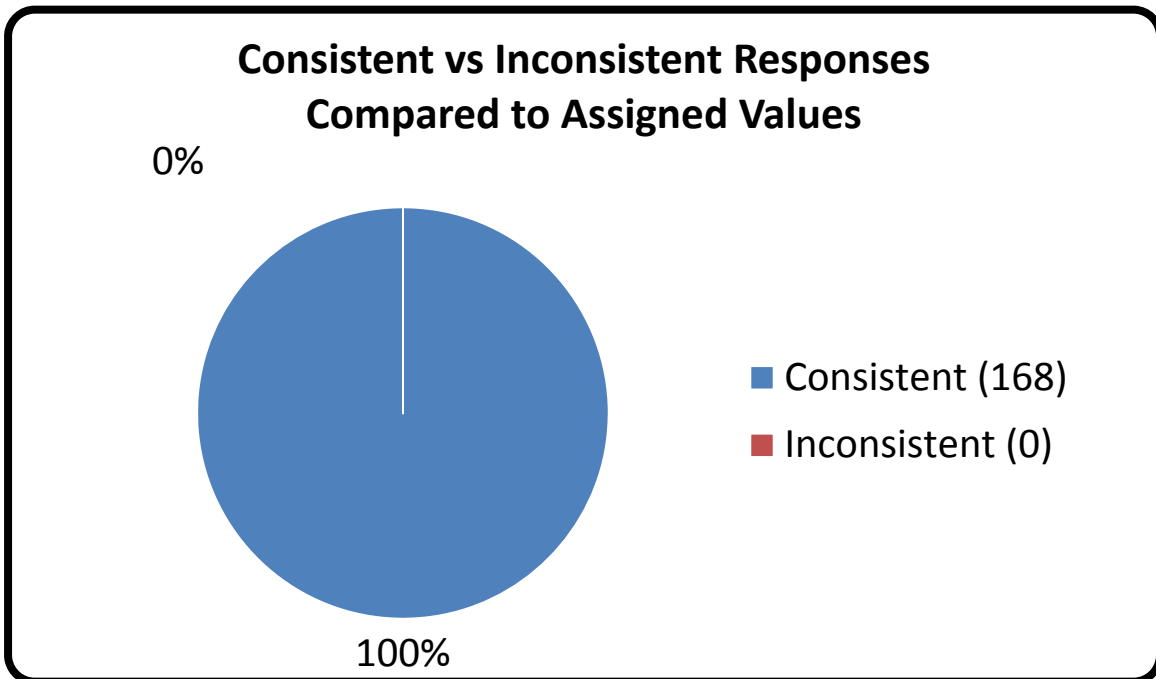
Fall 2018 Latent Print Processing Proficiency Test #18502

This proficiency test consisted of three exhibits. These exhibits were created by depositing known latent prints onto both porous and non-porous surfaces using appropriate matrices. The participant was required to process the exhibits for the presence of friction ridge detail. The assigned values are as follows:

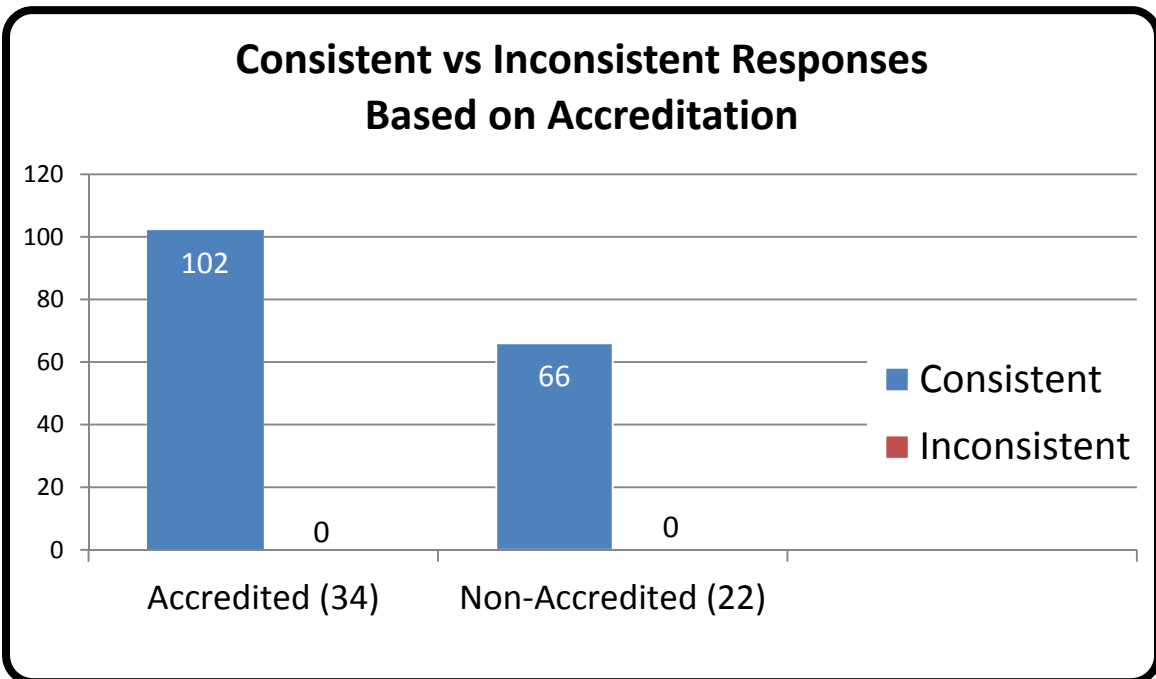
Exhibits Ex. #	Assigned Value
Ex. 1	Friction Ridge Detail <u>Was Not</u> Developed
Ex. 2	Friction Ridge Detail <u>Was</u> Developed – Supported with Electronically Captured Image
Ex. 3	Friction Ridge Detail <u>Was</u> Developed – Supported with Electronically Captured Image

The assigned values were determined through the ground truth information and verified through unanimous agreement during pre-distribution testing.

Appendix 2



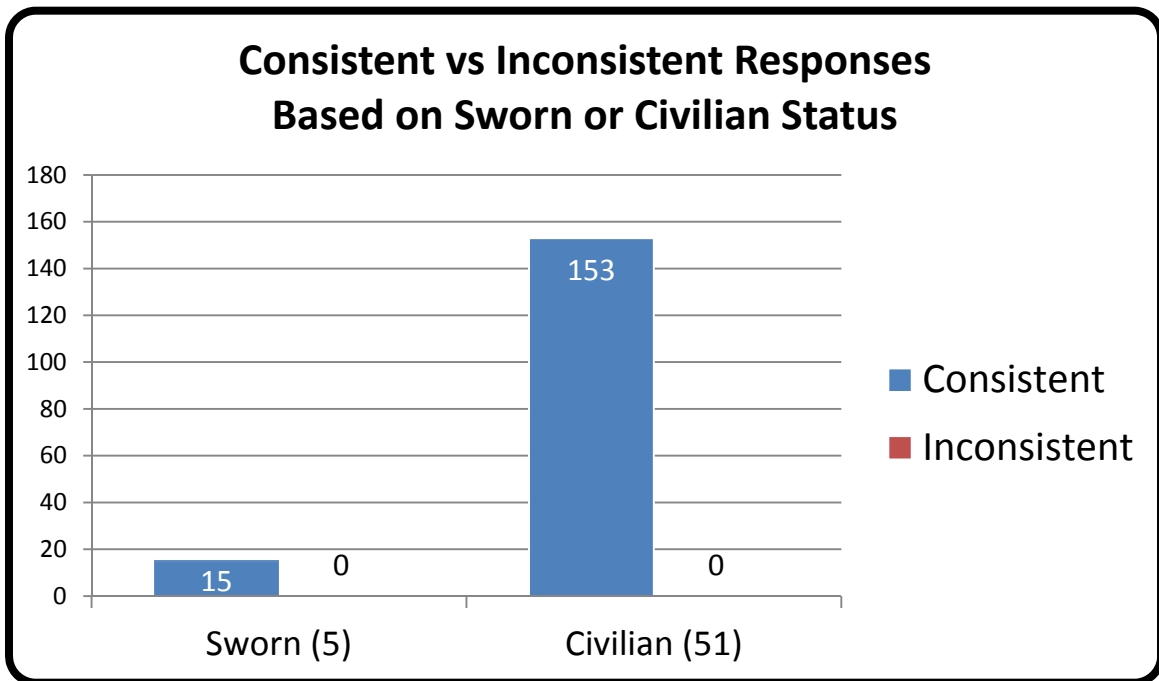
Appendix 3



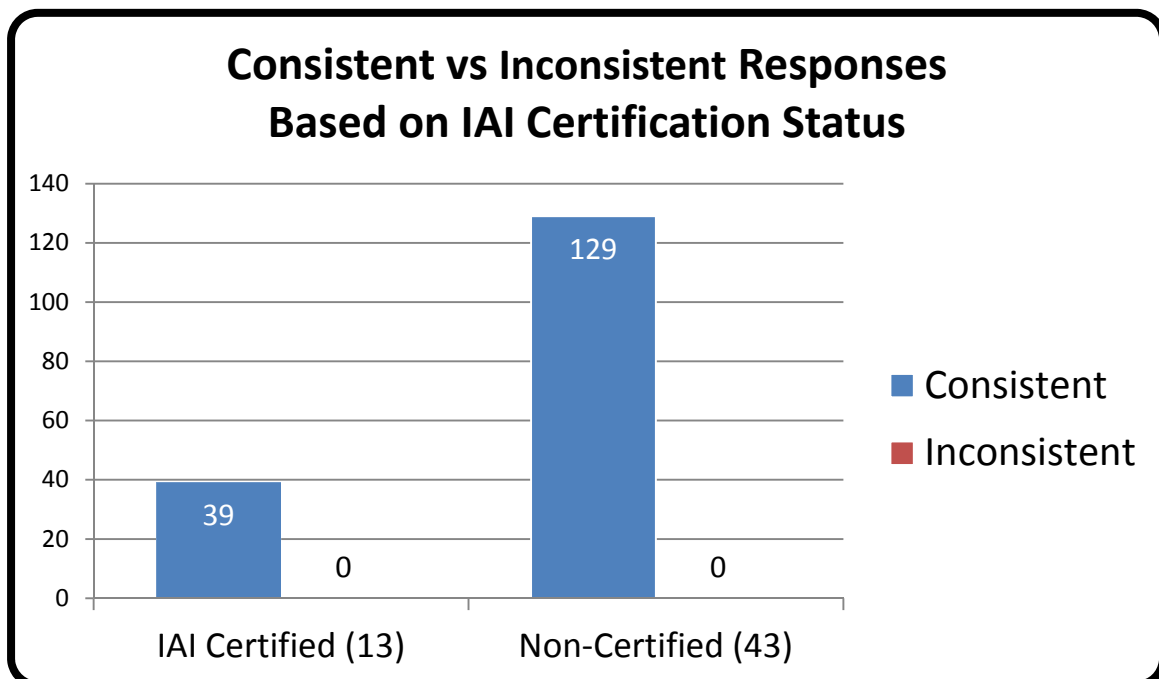
*Numerical values shown are based on **56 participant submissions** equaling **168 total responses**.

*For further information, please read **Manufacturer's Additional Observations** on the final page of this report.

Appendix 4



Appendix 5

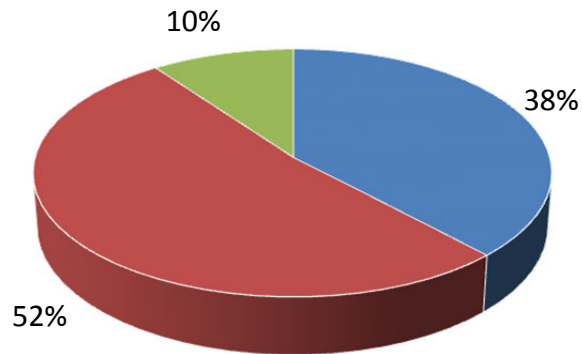


*Numerical values shown are based on **56 participant submissions** equaling **168 total responses**.

*For further information, please read **Manufacturer's Additional Observations** on the final page of this report.

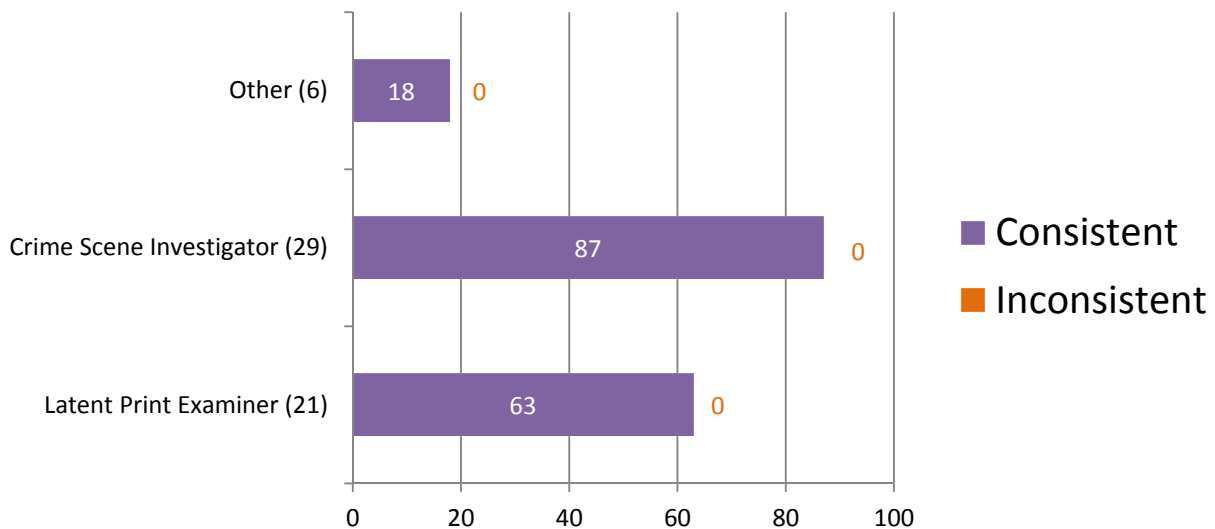
Appendix 6

Percentage of Participants Based on Primary Job Position



- Latent Print Examiner (21)
- Crime Scene Investigator (29)
- Other (6)

Consistent vs Inconsistent Responses Based on Primary Job Position

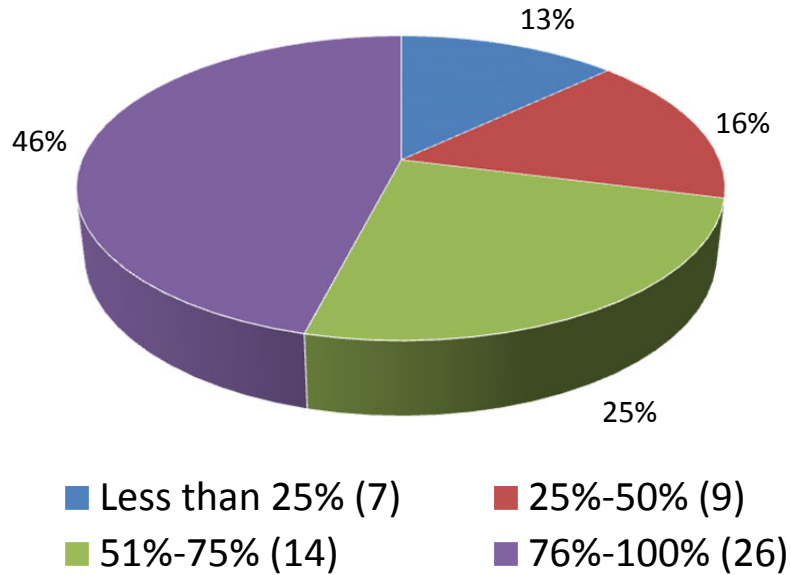


*Numerical values shown are based on **56 participant submissions** equaling **168 total responses**.

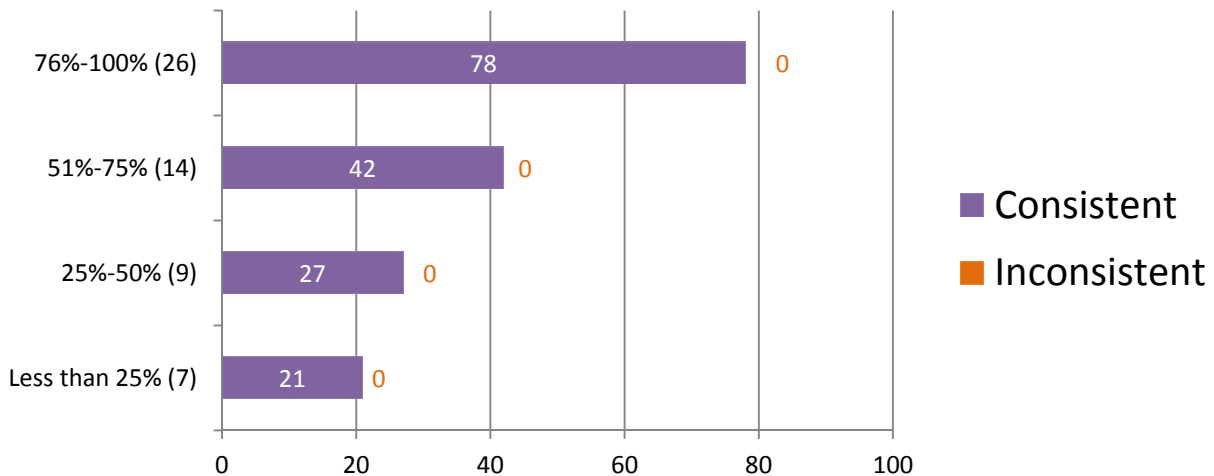
*For further information, please read **Manufacturer's Additional Observations** on the final page of this report.

Appendix 7

Percentage of Participants Based on Time Devoted to Latent Print Processing and Examination



Consistent vs Inconsistent Responses Based on Time Devoted to Latent Print Processing and Examination

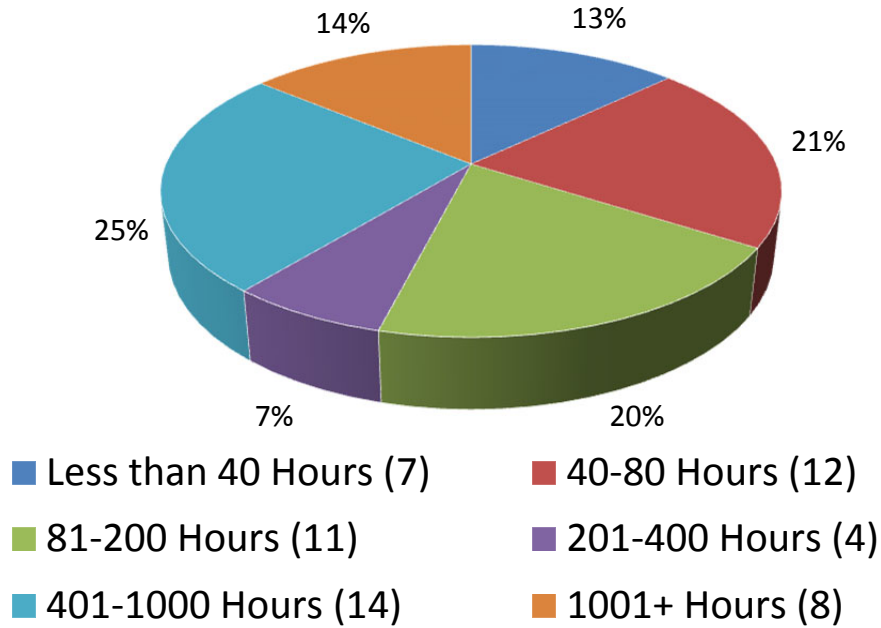


*Numerical values shown are based on **56 participant submissions** equaling **168 total responses**.

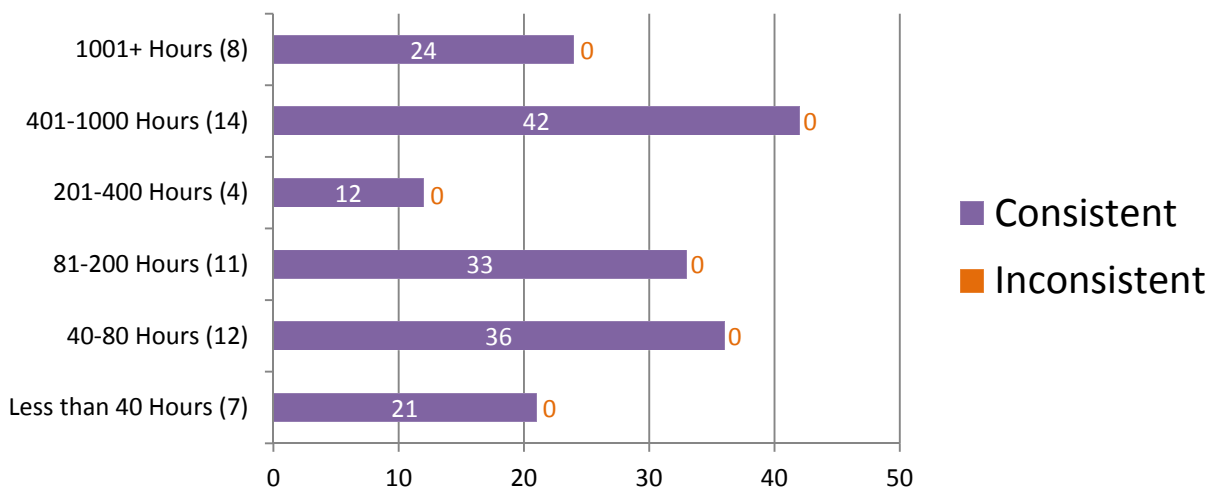
*For further information, please read **Manufacturer's Additional Observations** on the final page of this report.

Appendix 8

Percentage of Participants Based on Hours of Latent Print Processing Training Completed



Consistent vs Inconsistent Responses Based on Hours of Latent Print Processing Training Completed

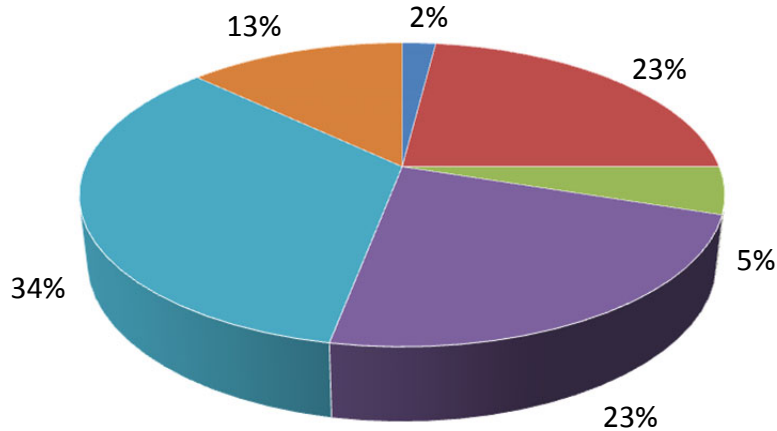


*Numerical values shown are based on **56 participant submissions** equaling **168 total responses**.

*For further information, please read **Manufacturer's Additional Observations** on the final page of this report.

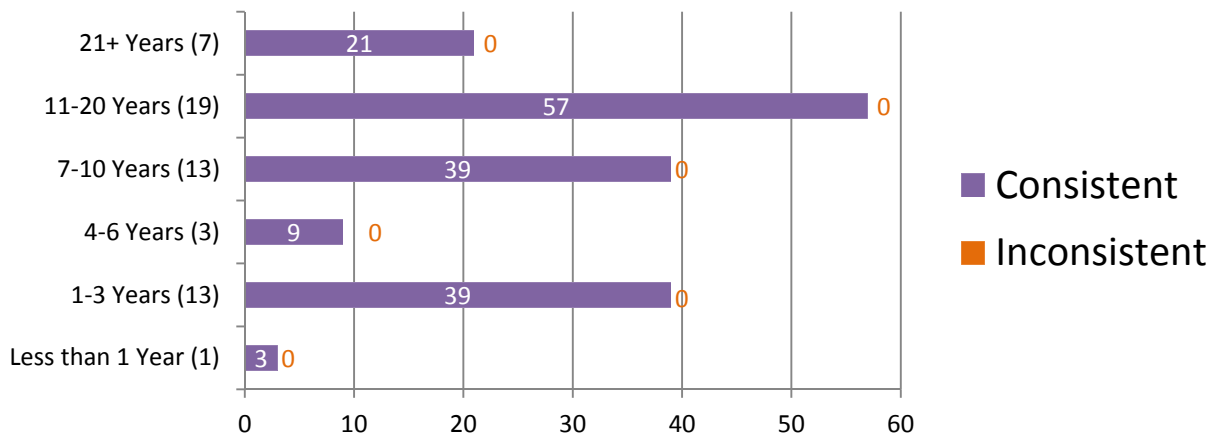
Appendix 9

**Percentage of Participants
Based on Years of Experience using Latent Print
Processing Techniques**



■ Less than 1 Year (1) ■ 1-3 Years (13) ■ 4-6 Years (3)
■ 7-10 Years (13) ■ 11-20 Years (19) ■ 21+ Years (7)

**Consistent vs Inconsistent Responses
Based on Years of Experience using Latent Print
Processing Techniques**

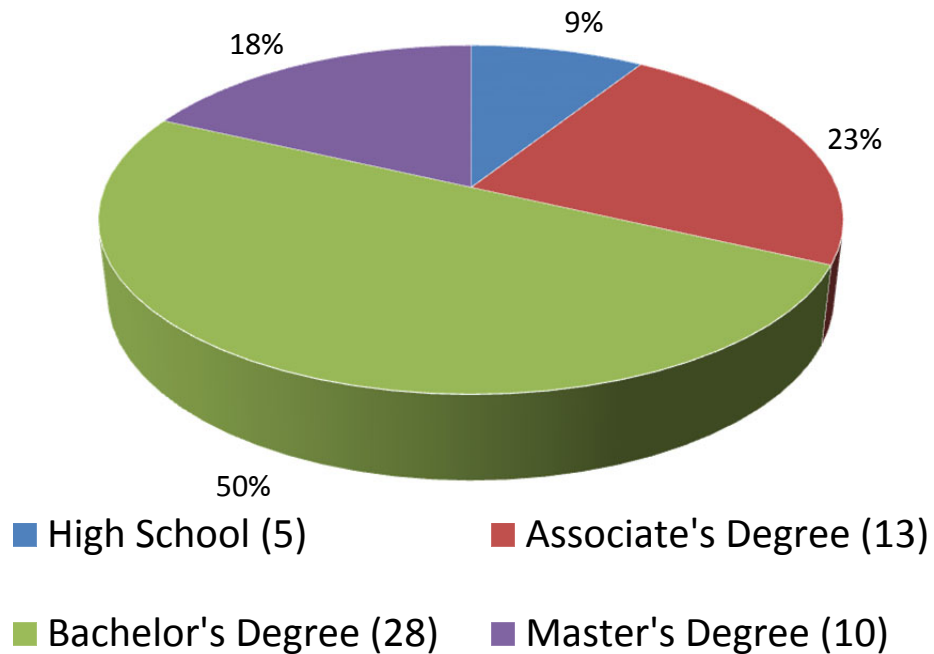


*Numerical values shown are based on **56 participant submissions** equaling **168 total responses**.

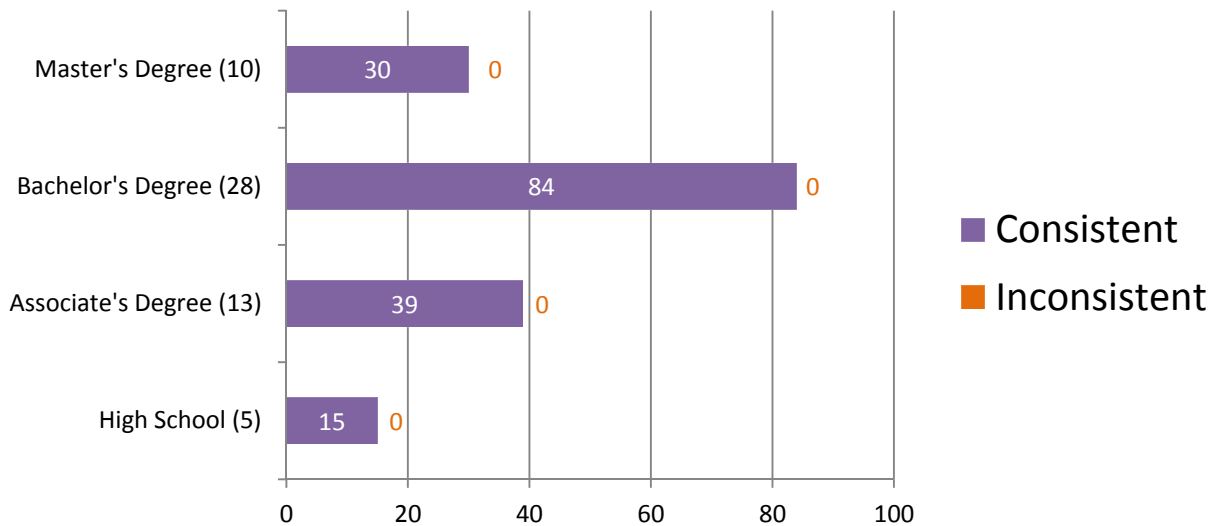
*For further information, please read **Manufacturer's Additional Observations** on the final page of this report.

Appendix 10

Percentage of Participants Based on Highest Level of Education Completed



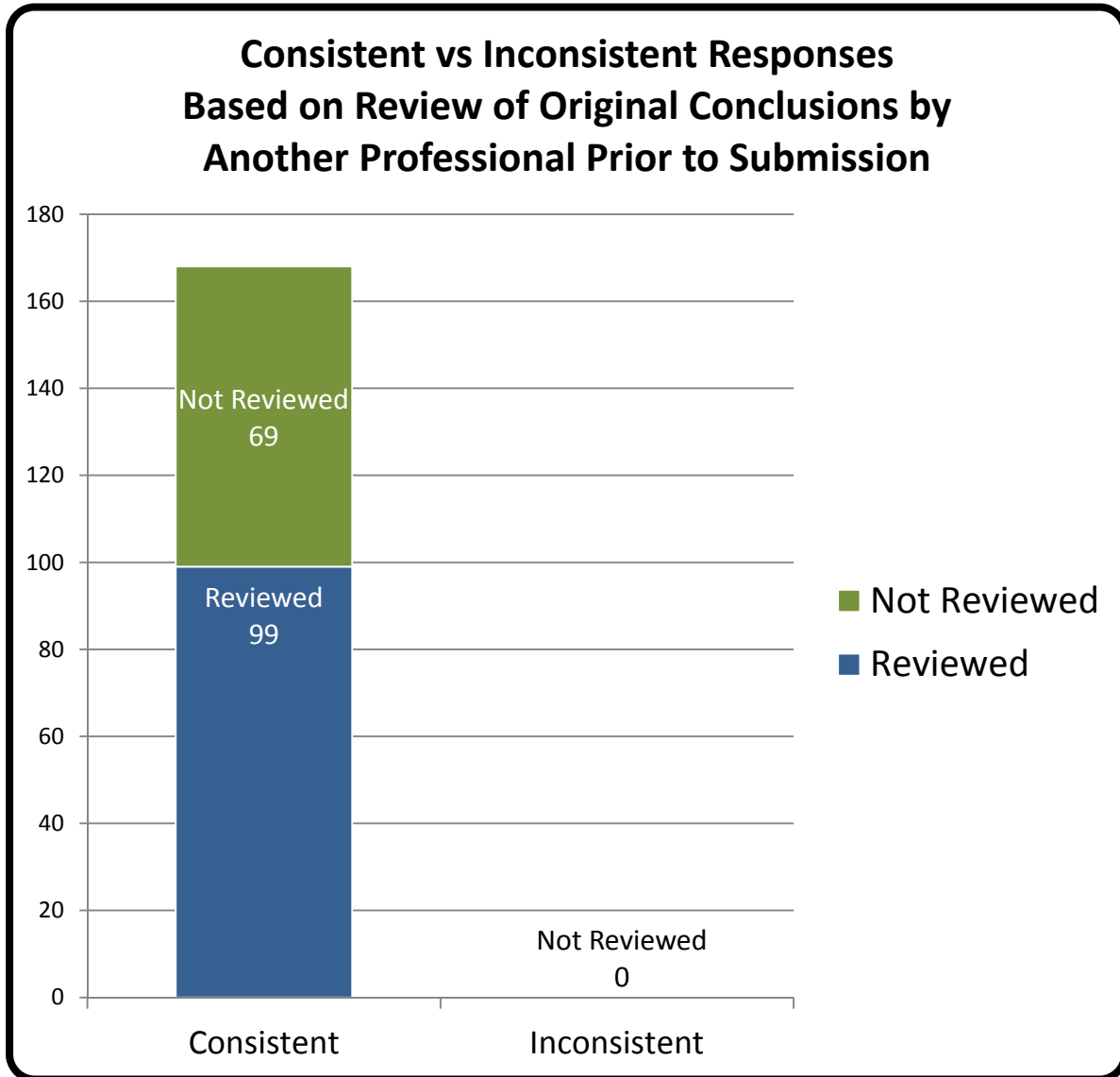
Consistent vs Inconsistent Responses Based on Highest Level of Education Completed



*Numerical values shown are based on **56 participant submissions** equaling **168 total responses**.

*For further information, please read **Manufacturer's Additional Observations** on the final page of this report.

Appendix 11



*Numerical values shown are based on **56 participant submissions** equaling **168 total responses**.

*For further information, please read *Manufacturer's Additional Observations* on the final page of this report.

Appendix 12

Participant Responses Listed by Test Code

	Exhibit #	Ex. 1	Ex. 2	Ex. 3
	Assigned Values	Friction Ridge Detail <u>Was Not</u> Developed	Friction Ridge Detail <u>Was</u> Developed	Friction Ridge Detail <u>Was</u> Developed
Test Code	3995R18502	Friction Ridge Detail <u>Was Not</u> Developed	Friction Ridge Detail <u>Was</u> Developed	Friction Ridge Detail <u>Was</u> Developed
	7446I18502	Friction Ridge Detail <u>Was Not</u> Developed	Friction Ridge Detail <u>Was</u> Developed	Friction Ridge Detail <u>Was</u> Developed
	4348K18502	Friction Ridge Detail <u>Was Not</u> Developed	Friction Ridge Detail <u>Was</u> Developed	Friction Ridge Detail <u>Was</u> Developed
	8326J18502	Friction Ridge Detail <u>Was Not</u> Developed	Friction Ridge Detail <u>Was</u> Developed	Friction Ridge Detail <u>Was</u> Developed
	4144X18502	Friction Ridge Detail <u>Was Not</u> Developed	Friction Ridge Detail <u>Was</u> Developed	Friction Ridge Detail <u>Was</u> Developed
	786W18502	Friction Ridge Detail <u>Was Not</u> Developed	Friction Ridge Detail <u>Was</u> Developed	Friction Ridge Detail <u>Was</u> Developed
	8575A18502	Friction Ridge Detail <u>Was Not</u> Developed	Friction Ridge Detail <u>Was</u> Developed	Friction Ridge Detail <u>Was</u> Developed
	8620J18502	Friction Ridge Detail <u>Was Not</u> Developed	Friction Ridge Detail <u>Was</u> Developed	Friction Ridge Detail <u>Was</u> Developed
	2758J18502	Friction Ridge Detail <u>Was Not</u> Developed	Friction Ridge Detail <u>Was</u> Developed	Friction Ridge Detail <u>Was</u> Developed
	4346B18502	Friction Ridge Detail <u>Was Not</u> Developed	Friction Ridge Detail <u>Was</u> Developed	Friction Ridge Detail <u>Was</u> Developed
	7739I18502	Friction Ridge Detail <u>Was Not</u> Developed	Friction Ridge Detail <u>Was</u> Developed	Friction Ridge Detail <u>Was</u> Developed
	871Z18502	Friction Ridge Detail <u>Was Not</u> Developed	Friction Ridge Detail <u>Was</u> Developed	Friction Ridge Detail <u>Was</u> Developed

	Assigned Values	Friction Ridge Detail Was Not Developed	Friction Ridge Detail Was Developed	Friction Ridge Detail Was Developed
Test Code	313R18502	Friction Ridge Detail <u>Was Not</u> Developed	Friction Ridge Detail <u>Was</u> Developed	Friction Ridge Detail <u>Was</u> Developed
	3637C18502	Friction Ridge Detail <u>Was Not</u> Developed	Friction Ridge Detail <u>Was</u> Developed	Friction Ridge Detail <u>Was</u> Developed
	4644K18502	Friction Ridge Detail <u>Was Not</u> Developed	Friction Ridge Detail <u>Was</u> Developed	Friction Ridge Detail <u>Was</u> Developed
	7425E18502	Friction Ridge Detail <u>Was Not</u> Developed	Friction Ridge Detail <u>Was</u> Developed	Friction Ridge Detail <u>Was</u> Developed
	9555X18502	Friction Ridge Detail <u>Was Not</u> Developed	Friction Ridge Detail <u>Was</u> Developed	Friction Ridge Detail <u>Was</u> Developed
	185U18502	Friction Ridge Detail <u>Was Not</u> Developed	Friction Ridge Detail <u>Was</u> Developed	Friction Ridge Detail <u>Was</u> Developed
	6298I18502	Friction Ridge Detail <u>Was Not</u> Developed	Friction Ridge Detail <u>Was</u> Developed	Friction Ridge Detail <u>Was</u> Developed
	7248X18502	Friction Ridge Detail <u>Was Not</u> Developed	Friction Ridge Detail <u>Was</u> Developed	Friction Ridge Detail <u>Was</u> Developed
	2874Y18502	Friction Ridge Detail <u>Was Not</u> Developed	Friction Ridge Detail <u>Was</u> Developed	Friction Ridge Detail <u>Was</u> Developed
	3948L18502	Friction Ridge Detail <u>Was Not</u> Developed	Friction Ridge Detail <u>Was</u> Developed	Friction Ridge Detail <u>Was</u> Developed
	9772R18502	Friction Ridge Detail <u>Was Not</u> Developed	Friction Ridge Detail <u>Was</u> Developed	Friction Ridge Detail <u>Was</u> Developed
	6329Q18502	Friction Ridge Detail <u>Was Not</u> Developed	Friction Ridge Detail <u>Was</u> Developed	Friction Ridge Detail <u>Was</u> Developed
	9581X18502	Friction Ridge Detail <u>Was Not</u> Developed	Friction Ridge Detail <u>Was</u> Developed	Friction Ridge Detail <u>Was</u> Developed
	6218V18502	Friction Ridge Detail <u>Was Not</u> Developed	Friction Ridge Detail <u>Was</u> Developed	Friction Ridge Detail <u>Was</u> Developed

	Assigned Values	Friction Ridge Detail Was Not Developed	Friction Ridge Detail Was Developed	Friction Ridge Detail Was Developed
Test Code	3783W18502	Friction Ridge Detail <u>Was Not</u> Developed	Friction Ridge Detail <u>Was</u> Developed	Friction Ridge Detail <u>Was</u> Developed
	7579P18502	Friction Ridge Detail <u>Was Not</u> Developed	Friction Ridge Detail <u>Was</u> Developed	Friction Ridge Detail <u>Was</u> Developed
	3522V18502	Friction Ridge Detail <u>Was Not</u> Developed	Friction Ridge Detail <u>Was</u> Developed	Friction Ridge Detail <u>Was</u> Developed
	8246B18502	Friction Ridge Detail <u>Was Not</u> Developed	Friction Ridge Detail <u>Was</u> Developed	Friction Ridge Detail <u>Was</u> Developed
	7310W18502	Friction Ridge Detail <u>Was Not</u> Developed	Friction Ridge Detail <u>Was</u> Developed	Friction Ridge Detail <u>Was</u> Developed
	1377Y18502	Friction Ridge Detail <u>Was Not</u> Developed	Friction Ridge Detail <u>Was</u> Developed	Friction Ridge Detail <u>Was</u> Developed
	2323T18502	Friction Ridge Detail <u>Was Not</u> Developed	Friction Ridge Detail <u>Was</u> Developed	Friction Ridge Detail <u>Was</u> Developed
	3751K18502	Friction Ridge Detail <u>Was Not</u> Developed	Friction Ridge Detail <u>Was</u> Developed	Friction Ridge Detail <u>Was</u> Developed
	3797F18502	Friction Ridge Detail <u>Was Not</u> Developed	Friction Ridge Detail <u>Was</u> Developed	Friction Ridge Detail <u>Was</u> Developed
	8142K18502	Friction Ridge Detail <u>Was Not</u> Developed	Friction Ridge Detail <u>Was</u> Developed	Friction Ridge Detail <u>Was</u> Developed
	991D18502	Friction Ridge Detail <u>Was Not</u> Developed	Friction Ridge Detail <u>Was</u> Developed	Friction Ridge Detail <u>Was</u> Developed
	7768E18502	Friction Ridge Detail <u>Was Not</u> Developed	Friction Ridge Detail <u>Was</u> Developed	Friction Ridge Detail <u>Was</u> Developed
	9146U18502	Friction Ridge Detail <u>Was Not</u> Developed	Friction Ridge Detail <u>Was</u> Developed	Friction Ridge Detail <u>Was</u> Developed
	1447U18502	Friction Ridge Detail <u>Was Not</u> Developed	Friction Ridge Detail <u>Was</u> Developed	Friction Ridge Detail <u>Was</u> Developed

		Assigned Values	Friction Ridge Detail Was Not Developed	Friction Ridge Detail Was Developed	Friction Ridge Detail Was Developed
Test Code	2870J18502	Friction Ridge Detail <u>Was Not</u> Developed	Friction Ridge Detail <u>Was</u> Developed	Friction Ridge Detail <u>Was</u> Developed	Friction Ridge Detail <u>Was</u> Developed
	7974B18502	Friction Ridge Detail <u>Was Not</u> Developed	Friction Ridge Detail <u>Was</u> Developed	Friction Ridge Detail <u>Was</u> Developed	Friction Ridge Detail <u>Was</u> Developed
	1135S18502	Friction Ridge Detail <u>Was Not</u> Developed	Friction Ridge Detail <u>Was</u> Developed	Friction Ridge Detail <u>Was</u> Developed	Friction Ridge Detail <u>Was</u> Developed
	675C18502	Friction Ridge Detail <u>Was Not</u> Developed	Friction Ridge Detail <u>Was</u> Developed	Friction Ridge Detail <u>Was</u> Developed	Friction Ridge Detail <u>Was</u> Developed
	4545S18502	Friction Ridge Detail <u>Was Not</u> Developed	Friction Ridge Detail <u>Was</u> Developed	Friction Ridge Detail <u>Was</u> Developed	Friction Ridge Detail <u>Was</u> Developed
	9480V18502	Friction Ridge Detail <u>Was Not</u> Developed	Friction Ridge Detail <u>Was</u> Developed	Friction Ridge Detail <u>Was</u> Developed	Friction Ridge Detail <u>Was</u> Developed
	4721P18502	Friction Ridge Detail <u>Was Not</u> Developed	Friction Ridge Detail <u>Was</u> Developed	Friction Ridge Detail <u>Was</u> Developed	Friction Ridge Detail <u>Was</u> Developed
	8821G18502	Friction Ridge Detail <u>Was Not</u> Developed	Friction Ridge Detail <u>Was</u> Developed	Friction Ridge Detail <u>Was</u> Developed	Friction Ridge Detail <u>Was</u> Developed
	8620I18502	Friction Ridge Detail <u>Was Not</u> Developed	Friction Ridge Detail <u>Was</u> Developed	Friction Ridge Detail <u>Was</u> Developed	Friction Ridge Detail <u>Was</u> Developed
	7967D18502	Friction Ridge Detail <u>Was Not</u> Developed	Friction Ridge Detail <u>Was</u> Developed	Friction Ridge Detail <u>Was</u> Developed	Friction Ridge Detail <u>Was</u> Developed
	6715P18502	Friction Ridge Detail <u>Was Not</u> Developed	Friction Ridge Detail <u>Was</u> Developed	Friction Ridge Detail <u>Was</u> Developed	Friction Ridge Detail <u>Was</u> Developed
	2126L18502	Friction Ridge Detail <u>Was Not</u> Developed	Friction Ridge Detail <u>Was</u> Developed	Friction Ridge Detail <u>Was</u> Developed	Friction Ridge Detail <u>Was</u> Developed
	7710K18502	Friction Ridge Detail <u>Was Not</u> Developed	Friction Ridge Detail <u>Was</u> Developed	Friction Ridge Detail <u>Was</u> Developed	Friction Ridge Detail <u>Was</u> Developed
	1000J18502	Friction Ridge Detail <u>Was Not</u> Developed	Friction Ridge Detail <u>Was</u> Developed	Friction Ridge Detail <u>Was</u> Developed	Friction Ridge Detail <u>Was</u> Developed

	Assigned Values	Friction Ridge Detail Was Not Developed	Friction Ridge Detail Was Developed	Friction Ridge Detail Was Developed
	3592M18502	Friction Ridge Detail <u>Was Not</u> Developed	Friction Ridge Detail <u>Was</u> Developed	Friction Ridge Detail <u>Was</u> Developed
	4851L18502	Friction Ridge Detail <u>Was Not</u> Developed	Friction Ridge Detail <u>Was</u> Developed	Friction Ridge Detail <u>Was</u> Developed

Totals

Exhibit #	Ex. 1	Ex. 2	Ex. 3
Assigned Values	Friction Ridge Detail Was Not Developed	Friction Ridge Detail Was Developed	Friction Ridge Detail Was Developed
Consistent Responses	56	56	56
Inconsistent Responses	0	0	0
Percentage of Consistent Responses	100%	100%	100%

Manufacturer's Additional Observations

Based upon a review of the one hundred sixty eight (168) total submitted responses, the following observations were noted:

1. There were no inconsistent responses submitted from participants in test 18502.

Authorized by: Ron Smith, President
Ron Smith and Associates, Inc.

Date of Issue: November 27, 2018